



**SikaSmart™**

EXPERT SOLUTIONS  
FOR THE BUILDING ENVELOPE

**A SMARTER APPROACH  
TO BUILDING DESIGN  
AND CONSTRUCTION**

**BUILDING TRUST**



# IT'S YOUR ENVIRONMENT. TAKE CONTROL OF IT WITH BUILDING ENVELOPE SOLUTIONS FROM SIKA.

A building needs a high performance “envelope” that provides unyielding protection from the elements. SikaSmart from Sika Corporation is designed to do just that. Every portion of your building’s outer structure, from roof and exterior walls to basement, can be vulnerable to water intrusion and weathering causing wet insulation, air leakage and premature deterioration of construction materials. These problems often result in costly maintenance and repair, exorbitant energy costs, poor indoor air quality—even a shortened lifespan for your most valuable asset, the building itself.

Sika Corporation has more than 100 years of experience developing and producing a wide range of quality products and systems that cover, seal, bond, strengthen, reinforce, repair, and protect every portion of a building’s outer structure.

SikaSmart is the company’s single resource for integrated, compatible products and systems that produce superior protection for the building envelope. Customized building envelope strategies from Sika minimize threats to your building and help you to maximize your Return on Investment.

SikaSmart building envelope technology promotes building functionality, enhances the appearance of structures, and extends the life of your building and many of its major structural components. SikaSmart addresses an assortment of critical functions relating to new and existing construction, including roofing, concrete protection, concrete repair, sealing and bonding and protective floor finishes and coatings.

**BUILDING TRUST**





## Concrete Density

Reduced water-cement ratio results in a denser, more durable concrete.

- ▶ Sikament® and Sika® ViscoCrete® admixtures are highly effective PCE (Polycarboxylate) based products
- ▶ Sikament and Sika ViscoCrete facilitate cost-effective water reduction, which is important in watertight concrete applications



## Concrete Technology

Appropriate technology should always be considered when new watertight concrete structures are required.

- ▶ Appropriate concrete consistency should be selected to ensure proper compaction in critical locations such as joints and highly reinforced areas
- ▶ Self-Consolidating Concrete with Sika ViscoCrete offers enhanced consolidation, density, strength and durability when compared to conventional concrete



## Watertight Concrete

Reduced water absorption and increased resistance against water intrusion, even under water pressure, are critical to preventing leaks.

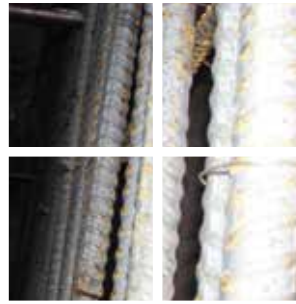
- ▶ Integral concrete solutions for watertight structures with Sika 1+ hydrophobic liquid, Sika WT-215 P crystalline, and Sika Watertight Concrete Powder hydrophobic pore-blocking admixtures represent a complete range of permeability reducing admixtures



## Pre-Applied Waterproofing System(s)

SikaProof® is a waterproofing solution for pre-applied applications. It is ideal for blindside waterproofing, zero lot line waterproofing as well as between slab and mud slab waterproofing.

- ▶ SikaProof utilizes a special grid technology for no lateral water migration
- ▶ It features a state of the art mechanical bonding process providing a superior bond as well as ease of installation
- ▶ Technical Service includes providing project specific details



## Corrosion of Concrete Reinforcement

Corrosion of steel in concrete represents a significant problem for concrete structures.

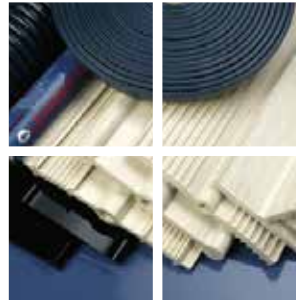
- ▶ Sika's corrosion inhibitors such as Sika CNI or migrating corrosion inhibitor, Sika FerroGard, will increase corrosion protection and prolong the overall service life of structures



## Concrete Cracking

The ability to resist cracking induced by internal or external forces is extremely important in watertight concrete.

- ▶ Cracks in the concrete serve as a source of water ingress, which can lessen concrete durability
- ▶ The SikaFiber® product line, accompanied by shrinkage-reducing admixtures like the Sika Control series, are effective tools in preventing concrete cracking



## Engineered Watertight Joints

Proper waterstop selection, detailing and installation are critical for any joint that must prevent water ingress to ensure a leak-free structure. Sika offers various types of joint solutions.

- ▶ A complete line of engineered PVC waterstops
- ▶ Strip-applied waterstops that install easily for non-moving joints
- ▶ SikaFuko® injection hose systems provide flexibility for complex installations and re-injection capability



## Post-Applied Waterproofing System(s)

Sika offers several solutions for post applied waterproofing including SikaPlan®. These systems offer solutions for your needs for both new construction and restoration projects.

- ▶ SikaPlan, a global product, offers a compartmentalization program for the most critical applications
- ▶ Solutions from state of the art membrane technology to traditional bituminous peel and stick membrane systems with SikaBit®



# PARKING GARAGES BUILDING ENVELOPE SOLUTIONS FROM SIKA.

**Parking structures are faced with a unique set of challenges and considerations. Designed for decades of daily vehicular traffic, they endure prolonged exposure to the harshest elements, including snow and ice, chemicals and abrasion, thermal movement, and demanding load conditions. Structures must also be safe for users, aesthetically pleasing and complementary to adjacent building architecture.**

Unprotected concrete exposed to rainfall, freeze-thaw, carbonation and deicing salts will deteriorate. "Passive" protection originally provided by the cement paste around the reinforcing steel will be destroyed, and unseen corrosion of embedded steel will occur, often resulting in spalls, cracks and leaks.

Sika's wide range of polyurethane and epoxy traffic coatings are designed to make concrete decks impermeable to water while offering durability and flexibility that meets the most demanding service conditions. Sikalastic Traffic Systems offer a full range of elastomeric, crack-bridging waterproofing solutions.

Sikagard protective coatings for walls and ceilings are formulated for ease of application and environmental safety, in addition to numerous performance benefits. These benefits include carbonation reduction, protection against water, chlorides and chemical ingress, hairline crack sealing, protection against cracking caused by dynamic and thermal movement, and improved light reflectivity and brightness.



**SikaSmart™**

EXPERT SOLUTIONS FOR THE BUILDING ENVELOPE

**THE EIGHTH WONDER OF THE WORLD?  
BUILDING ENVELOPE  
SOLUTIONS FROM SIKA.**



An aerial photograph of a modern skyscraper with a prominent blue roof section. The AT&T logo is visible on the roof. The building is surrounded by other city buildings and green spaces.

# ROOFING BUILDING ENVELOPE SOLUTIONS FROM SIKA.

**From world-renowned art museums to warehouses, roofing systems from Sika Corporation have been providing reliable protection to facilities from around the world for more than 50 years, in all types of climates.**

The roofing system plays an integral role in the protection of the building envelope, shielding it from the elements in a very hostile environment. Ultraviolet rays, ponding water and high winds all conspire to compromise the roof prematurely, leading to leaking, damage to the building, costly repairs, and possibly an early tear-off and re-roof.

Sika responds to these challenges with a variety of roofing systems designed to meet the specific needs and budget of almost any application. Sika's proven roofing systems do much more than simply keep buildings tight to the weather, however. Versatile single-ply and liquid-applied membrane systems boast sustainability features that save building owners money over the life of the roof—features that include unparalleled longevity, outstanding energy efficiency, durability with minimal maintenance, and recyclability.

Sika works with a nationwide network of authorized roofing applicators to understand your needs and provide the right system for your roof. Whether it's a roof coating to extend the life of your existing roof or a new liquid-applied or single-ply roofing system, you can count on Sika and its applicators to provide a technologically sound solution that will protect your building for years and even decades to come.

Schools, libraries, hospitals, stadiums and arenas, retail stores, factories and more around the globe rely on Sika roofing systems to protect their buildings. Many of these systems are still performing after 25 and 30 years of service.

Sika roofing systems address virtually any roofing application, regardless of slope, with configurations specifically developed for low and steep slope roofs, vegetated green roofs, plaza decking and solar roofing.



**SikaSmart™**

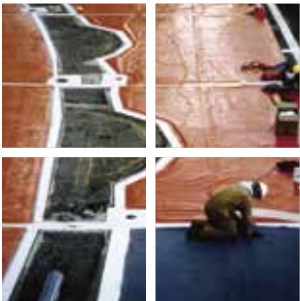
EXPERT SOLUTIONS FOR THE BUILDING ENVELOPE



## Self-Adhered Waterproofing Membrane System

**Composite sheet comprised of heat-weldable G476 waterproofing membrane with closed-cell foam backing. Puncture-resistant membrane performs in ponded water conditions, is resistant to roots and decay.**

- ▶ All-in-one self-adhered product that increases applicator productivity and expedites installation
- ▶ Foam backing factory-coated with pressure sensitive adhesive protected by a plastic release liner which is removed during installation
- ▶ Pressure sensitive adhesive provides tenacious bond to substrate, mitigating potential water migration under the membrane
- ▶ Range of membrane thicknesses to match application, overburden type, and specific project requirements



## Grid Waterproofing Membrane System

**For renovation projects with contaminated substrate, or when removal of existing waterproofing isn't practical. Offers all the advantages of loose-laid membrane installation with added security of adhered grid strips.**

- ▶ Installed economically over existing waterproofing with minor deck preparation and minimal removal of existing waterproofing system
- ▶ Grid strips compartmentalize waterproofing system into smaller areas, effectively limiting scope of overburden removal if problems develop



## Sikalastic RoofPro Inverted

**Fully-adhered and seamless, this liquid-applied waterproofing membrane delivers the design flexibility needed to waterproof the most challenging projects.**

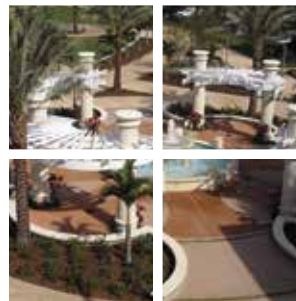
- ▶ Cold-applied eliminates the need for kettles and torches
- ▶ Single-component polyurethane comes "ready-to-use" and is easy to apply
- ▶ Alkali-resistant products allow for the direct application of concrete topping and paver setting materials



## Sikaflex and Sikasil Sealants

**A full range of flexible polyurethane and silicone sealants designed to waterproof cracks and joints with excellent joint movement properties.**

- ▶ SWR Institute validated, ensuring that products meet the industry's most demanding requirements
- ▶ High Shore A hardness and abrasion resistance allow for durable horizontal applications
- ▶ Fast-cure formulas allow for rapid turnaround time



## Engineered Coloring Systems from L.M. Scofield Company - A Sika Company

**A complete line of enduring and beautiful architectural concrete coloring systems, including integral color, color hardener and texturing systems.**

- ▶ CHROMIX admixtures for color-conditioned concrete
- ▶ LITHOCHROME color hardener
- ▶ SOLACHROME high-SRI concrete
- ▶ LITHOTEX pavecrafter



# PLAZA DECKS

## BUILDING ENVELOPE SOLUTIONS FROM SIKA.

**Plazas are an important feature for many buildings, providing the welcome ambiance of an outdoor area for people to gather and reflect. Often times these locations include seating, walkways, trees and shrubs. The wearing surface for plazas is usually architecturally significant and frequently consists of architectural colored concrete or a paver system. Plazas commonly function as the roof of an occupied space directly below, and thus are waterproofed to protect the structure, property and occupants below from water and moisture penetration.**

Choosing the right waterproofing system for plaza decks is one of the most important decisions you will make on your project. While plazas are exposed to similar challenges that roofs and facades face, they also must withstand heavy pedestrian traffic and sometimes even vehicular traffic. They are often exposed to ponding water and de-icing salts. Future access to the waterproofing system below is more difficult because of overburden which typically consists of the wearing surface and landscaping—and repairs can be very costly. Flashing details are complex as the various elements converge at the structural deck level, where the waterproofing system resides. All of these challenges require a waterproofing system with a proven track record capable of standing up to these demands for years to come.

Sika has been the preferred waterproofing system architects, consulting engineers and building owners have looked to for plaza deck applications for more than 30 years. Sika offers a wide range of waterproofing solutions that include single-ply and liquid-applied membranes, as well as polyurethane and silicone sealants—all designed to perform even under the most challenging circumstances.



**SikaSmart™**

EXPERT SOLUTIONS FOR THE BUILDING ENVELOPE





### EnergySmart Roof®

Reflective cool roof inhibits heat flow from solar radiation into the building interior, reducing air-conditioning energy consumption.

- ▶ Reduces roof temperatures by up to 70 degrees, A-C energy consumption by up to 20 percent
- ▶ Helps mitigate urban heat island effect



### EcoSmart Roof®

Economical and ecologically-responsible roof system that maximizes lifecycle and recycling.

- ▶ Vinyl roof membrane with recycled content and program to recycle at end of service life
- ▶ Extruded polystyrene insulation with 50-year re-use warranty



### Solar-Energy Solutions

The addition of solar panels to the rooftop can turn a roofing liability into an energy producing asset.

- ▶ Generates clean, renewable energy
- ▶ Roofing systems compatible with solar panel lifecycle
- ▶ Reflective roof surfaces increase solar panel efficiency



### Décor Roof Systems

Look of a standing seam metal roof with watertight integrity and design flexibility of a thermoplastic membrane.

- ▶ Design flexibility regardless of roof slope, shape or complexity
- ▶ An economical alternative to architectural metal
- ▶ Standard and custom colors



### Sikalastic RoofPro Systems

Seamless, fully bonded, liquid-applied polyurethane membrane.

- ▶ Ideal for exposed roofing, flashings, gutters, penetrations and other challenging details
- ▶ Cold-applied liquid with more than 25 years of proven performance
- ▶ Self-flashing, does not require pre-assembled flashing



### Vegetated Green Roofs

An aesthetically pleasing roofing system that lowers cooling costs and reduces rainwater runoff.

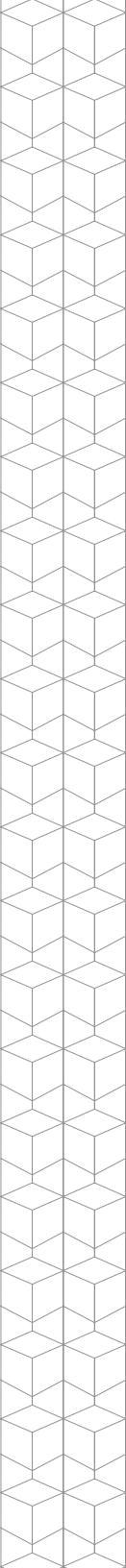
- ▶ Retains up to 75 percent of rainwater, reducing storm-water runoff
- ▶ Stays cooler than non-reflective dark roofs to save on building cooling expenses
- ▶ Protects the waterproofing membrane from UV radiation, extending its service life



### SikaCoat®

Elastomeric coatings provide a seamless waterproof barrier for roof maintenance, restoration and difficult-to-access or highly cluttered rooftops.

- ▶ Enhance roof reflectivity and reduce building cooling costs
- ▶ Extend the life of an existing roofing system
- ▶ Provide a viable option for difficult-to-access areas





# EXTERIOR WALLS & WINDOWS

## BUILDING ENVELOPE SOLUTIONS FROM SIKA.

**Exterior walls provide the first visual impression of a building and often reflect the way we feel about our work environment. The exterior walls also play a key role in climate control, weather protection and long-term sustainability, and thus design requirements for these walls have become increasingly demanding.**

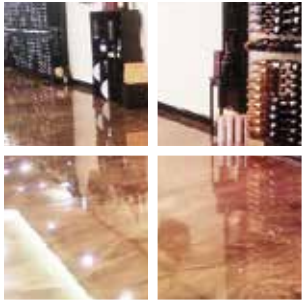
Energy savings requirements for exterior walls are stringent and continue to strongly influence building standards. Sika has developed systems and components for these walls that meet the requirements of today's building design challenges while also ensuring safe and economical construction.

Sika provides cost-effective, high-performance solutions for architectural concrete, waterproofing, sealing and bonding of exterior walls—and continues to develop new products and systems that satisfy the demands of systems requiring the latest in technological advances. Sika works in close cooperation with leading architects and specifiers to develop product technologies that meet specific market needs and requirements.



**SikaSmart™**

EXPERT SOLUTIONS FOR THE BUILDING ENVELOPE



### Decorative Flooring

(Lobbies, Retail, Public Areas)

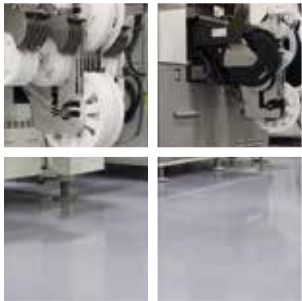
A dynamic range of colors and textures. Metallic, quartz and flake options provide varying degrees of thickness and surface texture, offering designers complete creative flexibility. Color-Fast UV stable resin technologies ensure lasting aesthetics.



### Industrial Flooring and Heavy-Duty Surfacing

(Manufacturing, Processing, Kitchen Areas)

From seamless thin film applications where durability and wear resistance are required to heavy-duty screed applications, Sika offers the most advanced technologies. Non-slip textures, thermal shock, impact, chemical and abrasion resistance are typical requirements in a wide range of facilities.



### Electrostatic Control

(Clean Rooms, Electronic Manufacturing Areas)

Static electricity can result in significant damage, injury or financial loss when electronic components or volatile chemicals are involved. Long-lasting Sikafloor ESD Control Flooring Systems protect the work environment from electrostatic discharge.



### Wall Coatings

(Pharmaceutical, Hygienic Processing Areas)

Technologically advanced wall system creates smooth, seamless environments. Wrapping or tying the wall, ceiling, floor and base into one smooth surface eliminates cracks and crevices that encourage bacterial growth, contaminants and harbor dirt. Attractive, high performance.



### Comfort Flooring

(Laboratories, Patient Care, Hospitality Areas)

ComfortFloor strikes balance between comfort and toughness by combining softness “under foot” with durability. Provides relief in areas where personnel walk or stand for long periods of time, yet stands up to high levels of pedestrian traffic, chair castors and wheeled loads. Reduces footfall sound and horizontal noise transmission, resulting in dramatically reduced noise levels.

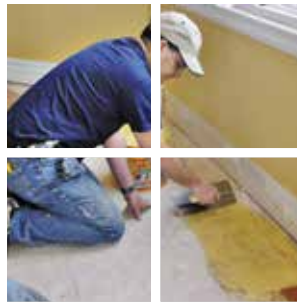


### Sika Level Self-Leveling Underlayments

(Interior Spaces Receiving Final Floor Finish)

A fully integrated and engineered system of floor leveling solutions.

- ▶ Highly fluid cement-based floor leveling material (underlayments)
- ▶ Choice of primers to meet all different flooring needs
- ▶ Preparatory products offered as a part of the complete package



### SikaBond Adhesives

(For All Wood Flooring)

Elastic polyurethane adhesives for wood flooring installations.

- ▶ Excellent adhesion for all types of wood including wide planks on a wide variety of substrates
- ▶ Low VOC meets LEED and SCAQMD requirements
- ▶ Creates sound reduction and sound dampening layer

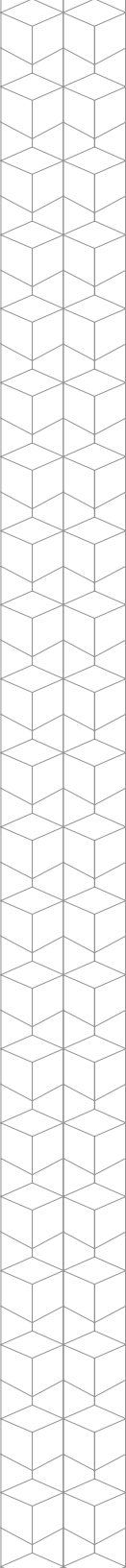


### Sikagard Epoxy Coatings

(Mechanical Rooms)

Chemical resistant and moisture tolerant epoxy coatings.

- ▶ Excellent adhesion to concrete
- ▶ Superior abrasion resistance to long-term wear
- ▶ Outstanding chemical resistance for long-term protection





# INTERIOR & MECHANICAL FLOOR SPACES

## BUILDING ENVELOPE SOLUTIONS FROM SIKA.

**Industrial, commercial and institutional buildings require floor systems that can withstand the daily rigors associated with manufacturing and processing. These floors are among the most exposed and highly stressed parts of any building.**

Sika's advanced flooring products safeguard both facility flooring and the building owner's bottom-line, with applications in a wide range of industries that include food and beverage, electronics and static control, clean rooms, pharmaceuticals, education, transportation, commercial / institutional construction, and general manufacturing.

Sikafloor is the most innovative and durable polymer flooring product line available today. These products are specifically formulated to create sturdy, seamless floor surfaces that are long-lasting and exhibit unparalleled resistance to hazards typically found in an industrial setting. The products protect against wear, abrasion, chemicals, impact, thermal shock, stains, harsh chemicals, electrostatic discharge, spark/ignition, and UV light.

In addition, Sikafloor products supply an array of aesthetic and functional benefits which include excellent adhesion to concrete, light reflection for illumination of the workplace, high-gloss to satin finishes, high-wear finishes, numerous decorative options and fast-cure options for quick turnarounds.

Sika offers a diverse selection of epoxy and urethane floor coatings and resurfacers that comply with air quality mandates and help contribute to green building efforts. Many of the products are odor-free and VOC-compliant.



**SikaSmart™**

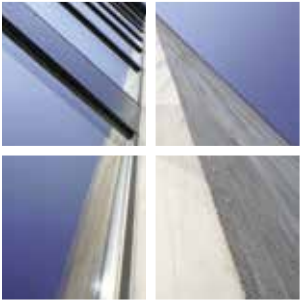
EXPERT SOLUTIONS FOR THE BUILDING ENVELOPE



## Structural Glazing

**Sikasil is a high performance system solution that supports designers and curtainwall manufacturers by offering many years of protection from extreme elements along with enhanced energy savings.**

- ▶ Sealing and bonding solutions for the entire system ensure compatibility
- ▶ Design reviews for curtainwall manufacturers and quality control support helps ensure successful installations
- ▶ Allows designers to minimize sight lines while also improving system performance
- ▶ Global track record based on high profile projects from around the world



## Insulating Glass

**Complete solutions for maintaining both weathering and energy performance. Includes primary sealant, polyurethane and silicone secondary sealants, with improved properties to maintain high U values.**

- ▶ Comprehensive solutions for sealing both standard and high energy saving coated glass and gas filled insulating glass units
- ▶ New innovations in high strength insulating glass silicone sealants lead to ultra high performance under many extremes while also providing for improved gas retention so units maintain high insulating value for years
- ▶ Consistent with Sika approach—supply important building system components that guarantee compatibility and color matching consistency



## Air Barrier

**System approach to protect the inside environment from the outside.**

- ▶ Sikagard liquid air barrier, SikaFlex 11 FC polyurethane seam sealer, self-adhered Sika MultiSeal transition tape and through wall flashing.
- ▶ Comprehensive details supported by a vigorous compatibility test program to ensure transitions work.
- ▶ ABAA approval for the assembly



## Silane Sealers

**Sikagard Silane Sealers provide excellent protection against water intrusion on concrete, stone and masonry walls. They provide excellent protection without altering the appearance of the existing facade.**

- ▶ Extends the life of concrete, masonry and stone facades
- ▶ Does not alter the original appearance - which is a great advantage for stone and masonry facades
- ▶ A complete range that offers silane, siloxane and cream type products for everyday as well as extremely challenging applications



## Weather Sealing of Facade Joints

**Sikasil and Sikaflex elastomeric sealants offer a full range of options for weathertight sealing of joints in building facades.**

- ▶ Hi UV resistance and long-term durability, proven in tough climates around the world
- ▶ Non-staining, will not discolor substrates
- ▶ Available in a wide range of architectural colors and packaging



## Wall Coatings

**Sikagard facade coatings provide long-term protection of reinforced concrete building facades from the ingress of carbon dioxide and water.**

- ▶ Enhance the aesthetics of concrete and masonry
- ▶ Extends the life of reinforced concrete
- ▶ Breathable coatings, will not act as a vapor barrier



# BALCONIES

## BUILDING ENVELOPE SOLUTIONS FROM SIKA.

**Balconies must do it all. They are a part of a building's exterior, but at the same time are also considered to be a part of the building's living space and thus must be functional and attractive.**

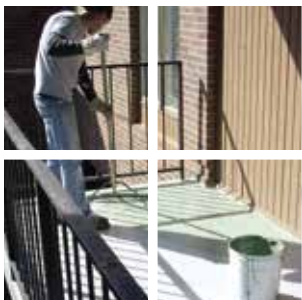
Balconies and terraces are highly stressed because they consist of relatively thin sections of concrete permanently exposed to the weather on multiple sides. Effects from heat, frost, rain, chlorides and other pollutants all join together to cause cracks and leaks which can ultimately lead to failure of the concrete.

Sika has high-performance products that will protect your building and your investment with maximum waterproofing protection, while still offering a wide range of aesthetic options. Sika's diverse product line includes polyurethanes, epoxies and cement based coatings as well as high-performance sealants that are designed to make concrete and masonry impermeable to water. These products offer the flexibility needed to handle all your balcony waterproofing needs.



**SikaSmart™**

EXPERT SOLUTIONS FOR THE BUILDING ENVELOPE



### Sikalastic Traffic Systems

Complete one- and two-component polyurethanes, elastomeric waterproofing systems for concrete balconies and terraces.

- ▶ Outstanding resistance to abrasion and wear
- ▶ Low odor, fast curing systems available
- ▶ Range of color options, including custom colors
- ▶ Decorative quartz and flake systems



### Sikagard FlexCoat

A flexible, cement-based protective coating system.

- ▶ Durable and weather resistant acrylic topcoat
- ▶ Water vapor permeable
- ▶ Range of color options, including custom colors. Decorative finishes available



### Sikadur Balcony System

A low modulus, epoxy-based durable protection system.

- ▶ Easy care, slip resistant surface
- ▶ Superior resistance to abrasion and wear
- ▶ Can be colored with solid or blended aggregates for a wide color selection



### Sikaflex Sealants

Elastomeric, polyurethane sealants for sealing joints.

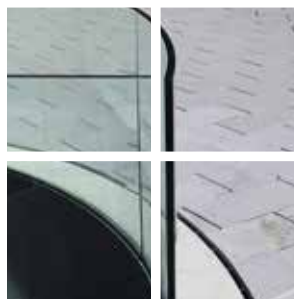
- ▶ Fast curing one- and two-component sealants
- ▶ Paintable and water submersible
- ▶ Available in a wide range of color options



### Sikagard Facade Coatings

Water-based acrylic coatings for underside of balconies and eyebrows.

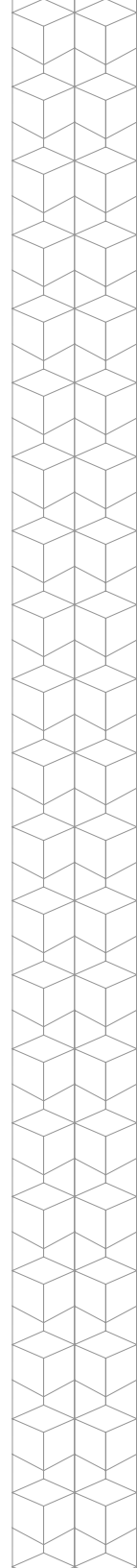
- ▶ Waterproof while remaining water vapor permeable
- ▶ Outstanding resistance to dirt and mildew
- ▶ Highly durable, exceptional resistance to chalking and UV resistance



### SikaGlaze

Pourable, self-leveling two component grout for embedding of glass panels.

- ▶ Fast-curing, high-strength system resulting in uniform stress distribution and reduction of functional stresses
- ▶ Suitable for indoor and outdoor applications



## Sika – Your Local Partner with a Global Presence

Sika is a globally active company in the specialty and construction product and chemicals businesses. It has subsidiary manufacturing, sales and technical support facilities in more than 90 countries around the world.

Sika is THE global market and technology leader in waterproofing, sealing, bonding, dampening, strengthening and protection of buildings and civil engineering structures.

Sika has more than 16,000 employees worldwide and is therefore ideally positioned to support the success of its customers.



# COMPLETE BUILDING ENVELOPE SOLUTIONS FROM ONE SOURCE.

Sika Corporation can assist you with all your building envelope needs.  
**Call 1-201-933-8800, or visit [usa.sika.com](http://usa.sika.com) to learn more  
about our comprehensive products and systems.**



Proud Member and Manufacturer of Verified Components

Our most current General Sales Conditions shall apply.  
Please consult the Product Data Sheet prior to any use and processing.

ENERGY STAR® is a trademark of the U.S. EPA.  
Green Globes® is a trademark of the Green Building Initiative.

### Sika Corporation

North American Headquarters  
201 Polito Ave  
Lyndhurst, NJ 07071  
Telephone: 201-933-8800  
Fax: 201-804-1076  
Email: [info@us.sika.com](mailto:info@us.sika.com)  
[usa.sika.com](http://usa.sika.com)

### Sika Canada, Inc.

Canadian Headquarters  
601, Avenue Delmar  
Point-Claire, QC  
H9R 4A9  
Telephone: 800-933-7452  
Fax: 514-697-3087  
Email: [marketing.construction@ca.sika.com](mailto:marketing.construction@ca.sika.com)  
[can.sika.com](http://can.sika.com)

**BUILDING TRUST**

